

NFP3

CCT-Power Selectable Flat Panel



LIGHTING SOLUTIONS

DESCRIPTION

The NFP3 is a versatile and high efficacy flat panel perfect for offices, schools, retail locations, healthcare facilities, and multi-use spaces with drop ceiling mounting. On-board CCT and power selectable switches allow users to "dial-in" the product to their requirements. Delivering the needed lumens at desk level, the flat panel has a eye-friendly emitting surface with 120 degree distribution and color temperatures from 3500K to 5000K to fit all general lighting needs. Our 5 year warranty and simple installation make the Nordeon Flat Panel an easy and effective choice.



Date: _____ Type: _____ Catalog Number: _____

Project Name: _____

ORDERING INFORMATION

LUMINAIRE								
MODEL	SIZE	POWER	CCT	CONTROL	VOLTAGE	OPTIC	FINISH	OPTION
NFP3 Nordeon Flat Panel	1X4 1' x 4'	SW Power Selectable	SK CCT Selectable 35/40/50K	DIM 0-10V Dimming	UNV 100-277V	BKLT Back-Lit	WH White	EM Emergency Battery Backup Field Installed
	2X2 2' x 2'					EDGLT Edge-Lit	CC Custom RAL Color	
	2X4 2' x 4'							

Custom solutions are available; consult factory for availability. Factory assistance is available via phone at (864) 487-3535 ext. 258 or via email at DesignServices@EXP-Brands.com.
 *Note: 1x4' is only available in Edge-Lit configuration.



SELECTABLE
POWER & CCT



NFP3

CCT-Power Selectable Flat Panel



LIGHTING SOLUTIONS

		1x4'	2x2'	2x4'
PHYSICAL	HOUSING	Ultra-Slim Aluminum Frame		
	LENS	Translucent Polycarbonate Diffuser		
	OVERALL DIMENSIONS	11.75" L x 47.75" W	23.75" L x 23.75" W	23.75" L x 47.75" W
	OPERATING TEMPERATURE	-4°F to 113°F		
	FINISH	White Powder Coat		
	WEIGHT	7.2 Pounds	6.8 Pounds	12.8 Pounds
	FACTORY PRESETS	4000K and 40 Watts		

ELECTRICAL	POWER (field selectable)	Field Selectable 20/30/40 Watts			Field Selectable 30/40/50 Watts
		20 Watts	30 Watts	40 Watts	50 Watts
	CURRENT	0.17 Amps at 120 Volts 0.07 Amps at 277 Volts	0.25 Amps at 120 Volts 0.11 Amps at 277 Volts	0.33 Amps at 120 Volts 0.14 Amps at 277 Volts	0.42 Amps at 120 Volts 0.18 Amps at 277 Volts
	VOLTAGE	Universal 100 to 277 Volts			
	DRIVER	External UL Listed Class-2 Constant Current Driver			
	CONTROL	0-10v Dimming			
	FREQUENCY	50/60Hz			
	POWER FACTOR	> 0.99			

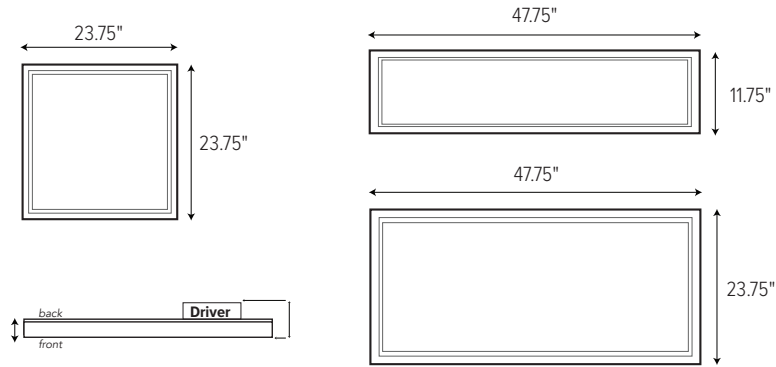
PHOTOMETRIC	LED	Field-Selectable 3500K, 4000K, 5000K			
	DIMMING RANGE	100% to 0%			
	COLOR RENDERING INDEX	> 80			
	BEAM ANGLE	110°			
	DELIVERED LUMEN OUTPUT (±5%) <small>Note: Values based on 120 LPW & Edge-Lit Optic</small>	20 Watts	30 Watts	40 Watts	50 Watts
		2400 Lumens	3600 Lumens	4800 Lumens	6000 Lumens
	EFFICACY	Up to 120 Lumens per Watt			
LUMEN MAINTENANCE	L70 > 50,000 Hours at 77°F*				

CERTIFICATIONS	SAFETY	UL Listed External Driver
	INGRESS PROTECTION	IP20
	WARRANTY	Five-Year Limited Warranty



* LED life may vary under actual field conditions due to external factors. Lifetime estimates are generated from actual testing in a controlled environment. Values are conservatively derived from those numbers.

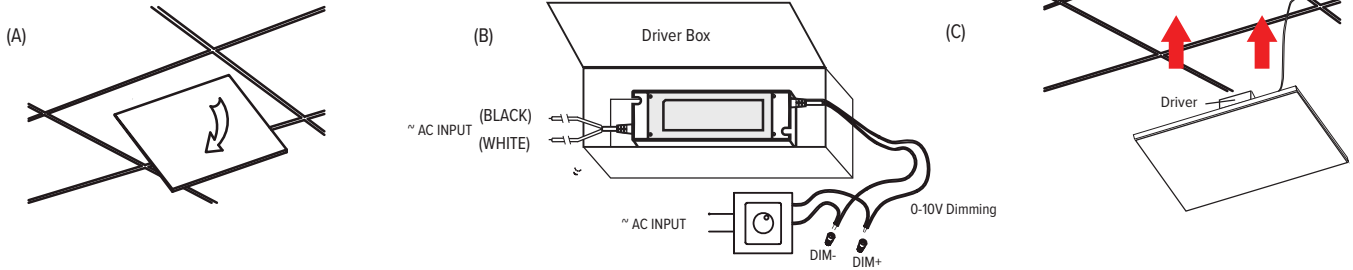
DIMENSIONS



INSTALLATION INSTRUCTIONS

Retrofit Procedure:

1. Turn OFF power to the fixture at the breaker panel before installation.
2. Open the diffuser from the light fixture.
3. Remove the fluorescent tubes and dispose of these properly as they may contain mercury.
4. Remove the ballast cover and disconnect host fixture ballast from main.
5. Remove the fixture (A).
6. Open Driver box and connect AC wires and dimming wire (B).
7. Lay-in Panel into the ceiling (C).
8. Switch ON power to the fixture at the breaker panel



ACCESSORIES

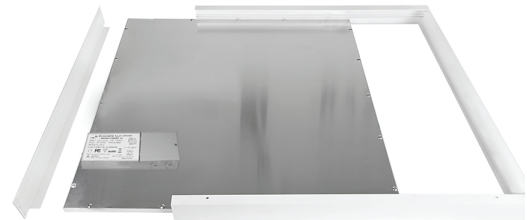
NFP-SMK-2X2

Surface Mount Kit for 2' x 2' Flat Panels



NFP-SMK-2X4

Surface Mount Kit for 2' x 4' Flat Panels



KIT INCLUDES:

- Surface Mount Kit
- Assembly Screws
- Anchoring Screws

WHAT YOU'LL NEED (NOT INCLUDED):

- Wiring supplies as specified by code
- LED Flat Panel fixture

Number	A	B	C	D
Accessories				
Quantity	2pcs	2pcs	8pcs	6pcs